



Rig-Grip



RIG-GRIP
SAFETY PRODUCTS

SERVING THE OILFIELD





Rig-Grip® Safety Mats

Rig-Grip® Safety Mats are designed primarily for rig floor applications, most commonly used around the rotary table they provide superb traction and a sound footing in this notoriously hazardous area. Rig-Grip® Mats can also be found on adjoining deck and setback areas and offer superb levels of traction even in the most hazardous of conditions.

Each mat is custom moulded and incorporates SafetyGrip's high traction studded surface, thus providing an excellent non-slip working surface.

Rotary applications typically consist of a 32mm (1¼") thick mat - this provides sufficient strength, durability and traction to handle even the heaviest of workloads.

General deck areas are usually 20mm (¾") thick, this provides adequate traction and slip protection for hazardous areas whilst helping keep cost down.

KEY FEATURES

- High Traction Anti-slip Surface
- Exceptional Tensile Strength/ Anti-Abrasion
- Grooved Surface for Positive Drainage
- Easy Installation
- Chemical and Corrosion Resistant
- Long Term Durability
- High Visibility Colours
- Hazard Identification
- Company Logos/Rig names
- Unmatched Impact Resistance

Rig-Grip Mats are proven to reduce the hazards of slip, trip and falls on the Drill Floor



SPECIFICATION

Rig-Grip® Mats are manufactured in-house at our Aberdeen facility, each mat is custom made and configured to our customer's exact specifications, thus ensuring an accurate fitment to your rig floor.

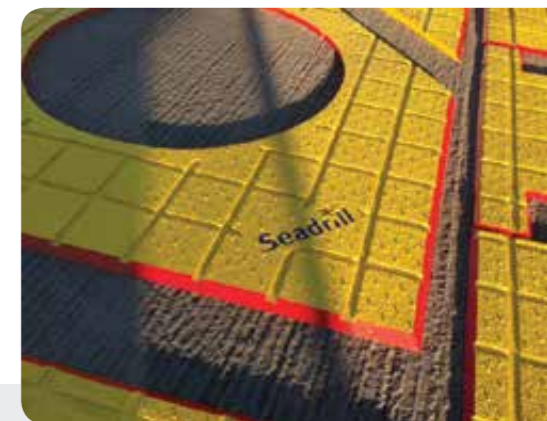
Rig-Grip® Mats are individually manufactured using high quality custom blended urethanes to ensure superior chemical, fire, tear and abrasion resistance.

Each mat can be coloured to your choice and incorporate various safety messages and slogans which are embossed into the surface, rig name and company logo are common place.

Shore hardness	33D/A90	DIN EN ISO 868
Tensile strength	8.0 N/mm ²	DIN 53455
Elongation at break	280%	DIN 53455
Tear resistance	22 N/mm	DIN 53356
Linear thermal expansion coefficient	110 10 ⁻⁶ K ⁻¹	DIN 53752
Grip Test results	0.95	Coefficient of friction (CoF)
Temperature range	-35°C to +95°C	-35°F to +200°F

Service

Unsure how to measure or size your mats? Please drop our technical team a line and they can assist you through the process - additionally we have field engineers who can undertake site surveys and inspection.





Rig-Grip® Setback Mats

Rig-Grip® Setback Mats are designed primarily for the pipe racking areas on the rig floor, they are commonly used to enhance pipe handling capabilities and reducing tripping time, most importantly they provide a safe surface for personnel to undertake their duties.

Rig-Grip® Setback Mats are designed to accommodate maximum fluid run-off, this is provided through the pre-moulded directional channels across the surface of the mat, moulded using high density polymers these heavy duty mats are designed to accommodate the heavy loads associated with drilling equipment, including various sized drill strings / collars / casings / down hole tools.

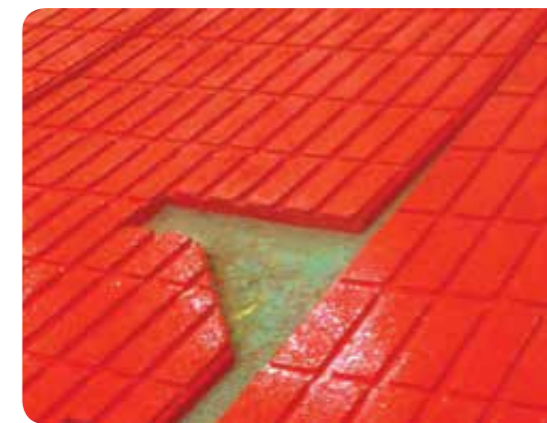
SPECIFICATION

Rig-Grip® heavy duty pipe matting is manufactured in-house at our Aberdeen facility using high quality chemical and fire resistant poly-urethane polymers. Each mat is custom moulded from 100% high density polymer, each mat incorporates fluid run-off channels and SafetyGrip's unique high traction surface, thus providing an excellent working surface.

Rig-Grip® Mats are proven to provide years of reliable service

KEY FEATURES

- Heavy Duty High Density Polymer
- Exceptional Tensile Strength/ Anti-Abrasion
- Grooved Surface for Positive Drainage
- Easy Installation
- Chemical and Corrosion Resistant
- Long Term Durability
- High Visibility Colours
- Hazard Identification
- Company Logos/Rig names
- Unmatched Impact Resistance



Applications are typically 40mm (1½") thick - this mat provides sufficient strength, durability to handle even the heaviest of workloads. Each mat is custom made and configured to our customer's exact specifications, thus ensuring an accurate fitment to your rig floor. The added extra of high visibility colouring and customised embossed safety message add an extra dimension to the matting.

Shore hardness	A 92	DIN EN ISO 868
Tensile strength	8.0 N/mm ²	DIN 53455
Elongation at break	280%	DIN 53455
Tear resistance	22 N/mm	DIN 53356
Linear thermal expansion coefficient	110 10 ⁻⁶ K ⁻¹	DIN 53752
Grip Test results	0.95	Coefficient of friction (CoF)
Temperature range	-35°C to +95°C	-35°F to +200°F

Rig-Grip® Setback Mats are fully customised and moulded to each rig application and weigh around 45kg per metre square.

Rig-Grip Safety Matting - Pipe Racking Mats Mat Thickness - 40mm (1½") High Density Polymer - Shore A 92 Hardness

Kilogram Force / Centimetre ² (KGF/CM ²)	Pound Force / Inch ² (IBF/IN ²)	Notable Compression Under Loading
703	100	3%
1757	250	5.9%
3515	500	12.3%
5273	750	19.1%
703	1000	24.9%
175.7	2500	54.1%
351.53	5000	60%





Rig-Grip® Pipe Mats

Rig-Grip® Anti-slip Pipe Mats are designed to assist with safe access onto pipe and tubular racking; Pipe storage racks are notorious hazardous areas where there is a high risk of potential injury. Rig-Grip® Pipe Matting Systems are designed to assist with prevention by removing the hazard and implementing a suitable flat non-slip surface for walking /working on. Rig-Grip® Pipe Mats are quick and easy to apply and will ensure your crew stay safe for longer.

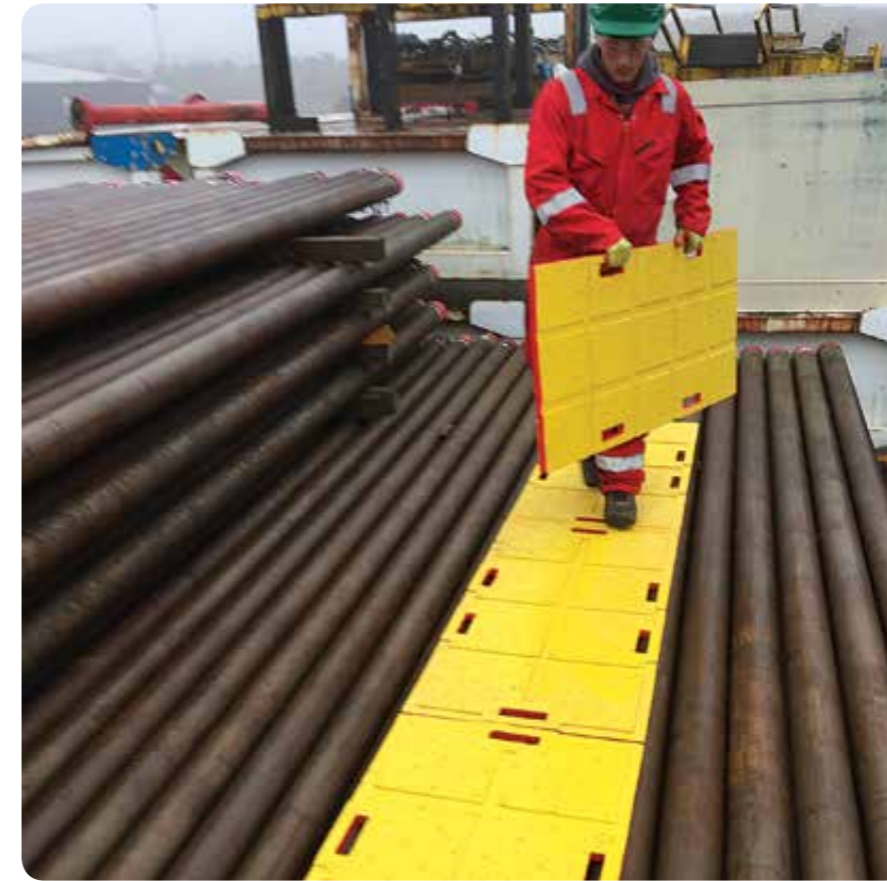
Rig-Grip® Pipe Mat is designed so it can be laid directly on your pipe rack. Each mat is designed to be universal so they can be used at any point on the rack, place them either along the length of the pipe or across the width, each Pipe Mat has suitable strength to bridge pipe up to 18" OD. Rig-Grip Pipe Mat incorporates six hand holds to ensure they are easy to handle, apply and retrieve.

SPECIFICATIONS

Rig-Grip® Pipe Mats are manufactured using high quality chemical and fire resistance polymers, these lightweight mats are extremely robust and will offer long term durability. Using the Rig-Grip® high traction studded surface they will offer superb level grip even in the harshest of conditions.

KEY FEATURES

- High Traction Surface
- Ease of Use
- Lightweight
- Tough and Durable
- Chemical and Corrosion resistant
- High Visibility Colours



Size

STANDARD SIZE		WEIGHT	
1200mm	600mm x 20mm	48" x 24" x 3/4"	16kg / 35lbs
Custom variations are also available upon request			

Technical Specification

Shore Hardness	33D/A90	DIN ISO 868
Tensile Strength	8.0 N/mm ²	DIN 53455
Elongation at Break	280%	DIN 53455
Tear Resistance	22 N/mm	DIN 53356
Grip test results	0.95	(CoF) Coefficient of Friction
Temperature range	-35°C to +95°C	-35°F to +200°F

Rig-Grip® Pipe Chock

SafetyGrip Solutions manufacture a wide range of pipe chocks and supports for securing pipe and casing. These heavy duty PU rubber chocks are essential to ensure your pipe is racked securely and will not roll across your deck. Supplied in a number of standard sizes these high visible chocks will not crack and split like traditional wooden chocks, thus ensuring a safe securing system that can be used and re-used time and time again.





Rig-Grip® Walkway and Deck Mats

Rig-Grip® Anti-slip Walkway and Deck Mats are designed to be installed directly onto your walkways, decks and working areas throughout your installation, each mat offers superb levels of grip and traction even in the harshest of conditions. Rig-Grip® Walkway Mats can be installed without the need for fixings or fasteners and can be laid directly on to your deck, they are proven to be very quick and simple to install.

Rig-Grip® Walkway and Deck Mats are supplied in a number of sizes and interlocking formats; they can be used for walkways and escape routes or for larger machinery spaces. With the added feature of hi-visibility colour coding and safety marking they will prove to be a valuable asset to your facility.

SPECIFICATIONS

Rig-Grip® Walkway Mats are manufactured using high grade custom blended urethane polymers that ensure superior chemical, tear and abrasion resistance. These heavy duty mats incorporate our unique high traction surfaces that are proven to be extremely robust and will offer long term durability.

KEY FEATURES

- High Traction Surface
- High Visibility
- Tough and Durable
- Chemical and Corrosion resistant
- Excellent Tensile and Tear Strength
- Easy to Install
- Hazard indication and safety markings



Sizing

Rig-Grip® Walkway and Deck Mats are available in a multitude of sizes, surface grades and colours. Additional features like route marking with directional arrows, safety markings and warning symbols can be applied to the surface for additional safety.

Rig-Grip® Walkway and Deck Mats are typically manufactured with interlocking dove tail joints to keep each piece locked securely together, thus ensuring limited movement during ongoing operations.

Each mat is 12mm (½") thick and will weigh around 15kg per metre square - customised variations are always available.

Technical Specification

Shore Hardness	33D/A90	DIN ISO 868
Tensile Strength	8.0 N/mm ²	DIN 53455
Elongation at Break	280%	DIN 53455
Tear Resistance	22 N/mm	DIN 53356
Grip test results	0.95	(CoF) Coefficient of Friction
Temperature range	-35°C to +95°C	-35°F to +200°F



Rig-Grip® Cargo Dunnage Mats

Rig-Grip® Anti-slip Cargo Dunnage Mats are designed to protect your decks and cargo landing areas from repeated cargo handling activities. Damaged decks and Cargo can be expensive to maintain and repair. Installing Rig-Grip Cargo Dunnage Mats will effectively reduce the impact of cargo handling by providing adequate protection to exposed surfaces. With the added feature of hi-visibility colour coding they can prove highly beneficial for highlighting areas or zoning of sections of the deck.

Rig-Grip® Cargo Dunnage Mats can be installed without the need for fixings or fasteners and can be laid directly on your deck, so no need for timely deck preparation as are proven to be very quick and simple to install. Rig-Grip® Cargo Dunnage Mats are supplied in a number of sizes and interlocking formats, they can be used to cover entire cargo deck areas or more specific to individual cargo landing zones.

SPECIFICATIONS

Rig-Grip® Cargo Dunnage Mats are manufactured using high grade custom blended urethane polymers that ensure superior chemical, tear and abrasion resistance. These heavy duty mats are extremely robust and will offer long term durability even under the harshest of operating conditions. Multiple sizes, surface and colour are available.

KEY FEATURES

- High Traction Surface
- High Visibility
- Tough and Durable
- Chemical and Corrosion resistant
- Excellent Tensile and Tear Strength



Cargo Decks

Rig-Grip® Interlocking Cargo Mats are ideal for covering large deck areas or even entire cargo decks. These mats are supplied using our unique interlocking format so when laid they offer excellent strength against shifting cargo. These Heavy Duty Interlocking mats can be supplied in a number of sizes, colours and textured surfaces.

CARGO MATS	
750mm x 750mm x 15mm	30" x 30" x 3/4"
1000mm x 1000mm x 15mm	39" x 39" x 3/4"
Custom variations are also available upon request	

Cargo Landing Zones

Rig-Grip® Cargo Landing Mats are designed for the smaller and more specific cargo landing zones - these are highly beneficial to areas where personnel may be present, available with safety markings and high visibility colouring to ensure maximum awareness. Supplied as interlocking sections to ensure no movement they can be supplied to the customer's exact size and specification.

CARGO LANDING PADS	
3000mm x 3000mm x 20mm	10' x 10' x 1/2"
3000mm x 5000mm x 20mm	10' x 16.5' x 1/2"
3000mm x 7000mm x 20mm	10' x 23' x 1/2"
Custom variations are also available upon request	



Locking Deck Pad assembly

Technical Specification

Shore Hardness	33D/A90	DIN ISO 868
Tensile Strength	8.0 N/mm ²	DIN 53455
Elongation at Break	280%	DIN 53455
Tear Resistance	22 N/mm	DIN 53356
Grip test results	0.95	(CoF) Coefficient of Friction
Temperature range	-35°C to +95°C	-35°F to +200°F



Rig-Grip

Safety Grip Solutions Limited
Unit 1 Cairnrobin Pipeyard
Marywell
Portlethen
Aberdeen
AB12 4SB
UK

info@safetygripsolutions.com
Tel: +44 (0)1224 784700
www.safetygripsolutions.com